

NEW PRODUCT

July 1, 2007

MARKET: Heating , Ventilation, Air Conditioning and Refrigeration

FUNCTION: This 2-terminal timer connects in series with the control voltage and load. When the supply voltage is applied, the load is energized. Upon removal of voltage, the load can not energize until the time delay has expired. If the time delay is completed before the supply voltage is re-applied, the load will energize immediately.

PURPOSE: Provides short-cycle protection for compressors in HVAC applications.

SIC#: 3585

CONTACT: 315-655-8476
www.airotronics.com

PELCO
COMPONENT TECHNOLOGIES
Putting Power to Work

2747 Rte 20E Cazenovia, NY 13035
www.pelcoaz.com

AIROTRONICS

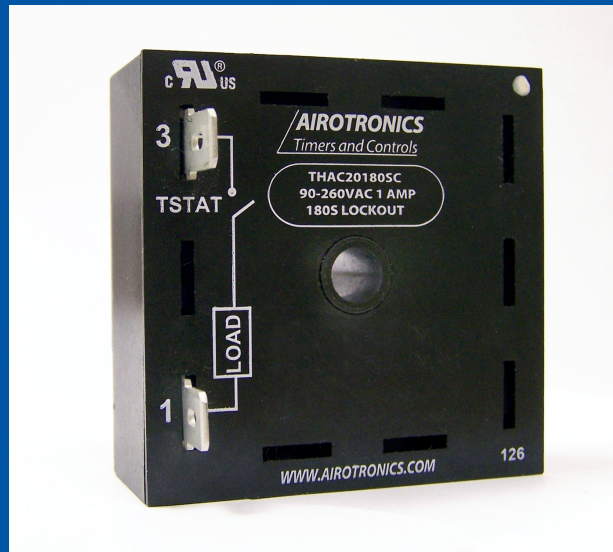
Timers and Controls **ACT**

A division of Pelco Component Technologies

CATEGORY: Cube Solid State

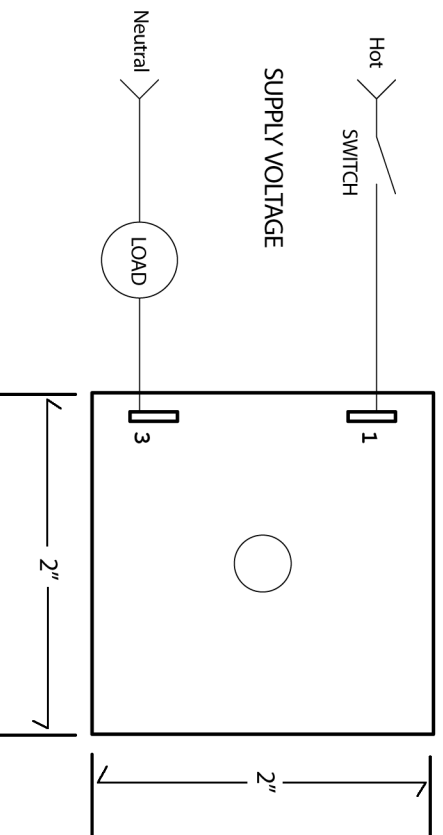
APPLICATION: Anti-short-cycle (Lockout) Timer

SERIES: THAC



FEATURES:

- Simple 2-terminal "in-line" connection
- Input voltage range from 90VAC–260VAC in one model
- 1 Amp solid state output
- Optional Delay On Make function up to 60 seconds
- Low cost
- Encapsulated for protection in harsh and humid environments
- Load can be connected on either terminal (neutral or hot)
- Compact 2" x 2" package
- Operational temperature range -40°C to +65°C
- Load can be in series with either hot or neutral



OUTPUT RATING 1Amp continuous, 10Amp inrush

OPERATION

When switch closes, load energizes.
 When switch opens, load de-energizes
 and time delay begins.
 Even if switch recloses during timing,
 load stays Off until delay expires.



SERIES: THAC

CATEGORY: Cube Solid State

APPLICATION: Anti-short-cycle
 (Lockout) Timer

July 1, 2007

315-655-8476 www.airotronics.com